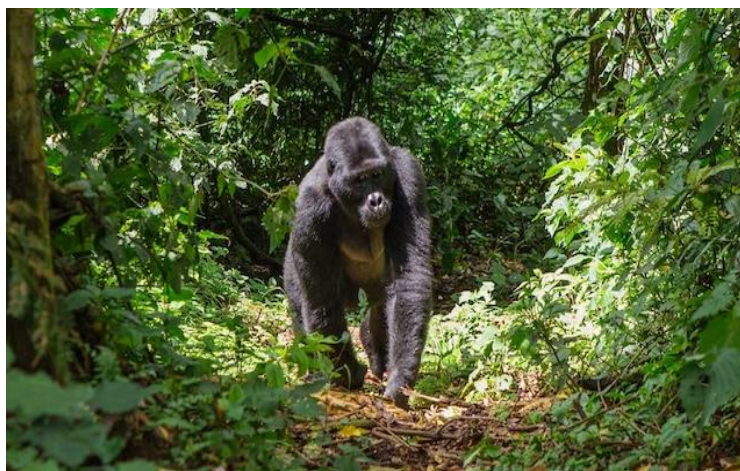


GROWTH

In Year 2 we have been learning about living things and their habitats. We have been focusing on identifying parts of the food chain, and understanding how there is a balance to every habitat that allows plants and animals to survive.



Deforestation is a major problem on our planet. Over 15 billion trees are cut down every year by humans. That is more than 1 football pitch every second! This process is destroying habitats for millions of animals and causing them to lose their homes.

We have created dioramas that show how animals live in their habitats and the essential items they depend on. We hope to show you how important it is that we use sustainable resources to make sure our planet, and its animals survive.



Year 2 have worked hard to re-create the habitats of many animals around our planet. The work pictured above shows how each habitat has a unique environment. These environments work by having a balance that is preserved by those who exist in it. Once this balance is upset, by deforestation or other human influences, it puts the lives of animals that live there at risk. It is our duty to ensure that the resources we use are not causing the habitats of animals to be destroyed.